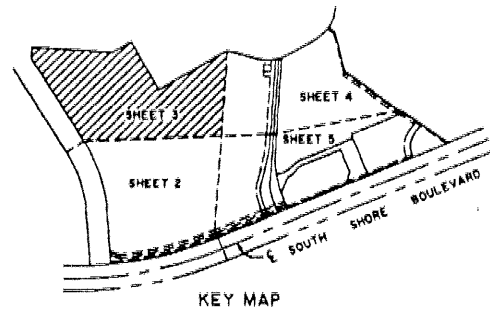


THE INN AT POLO COMMERCIAL DEVELOPMENT

LYING IN SECTIONS 10, 14 AND 15, TOWNSHIP 44 SOUTH, RANGE 41 EAST,
VILLAGE OF WELLINGTON, PALM BEACH COUNTY, FLORIDA.

SHEET 3 OF 5

56

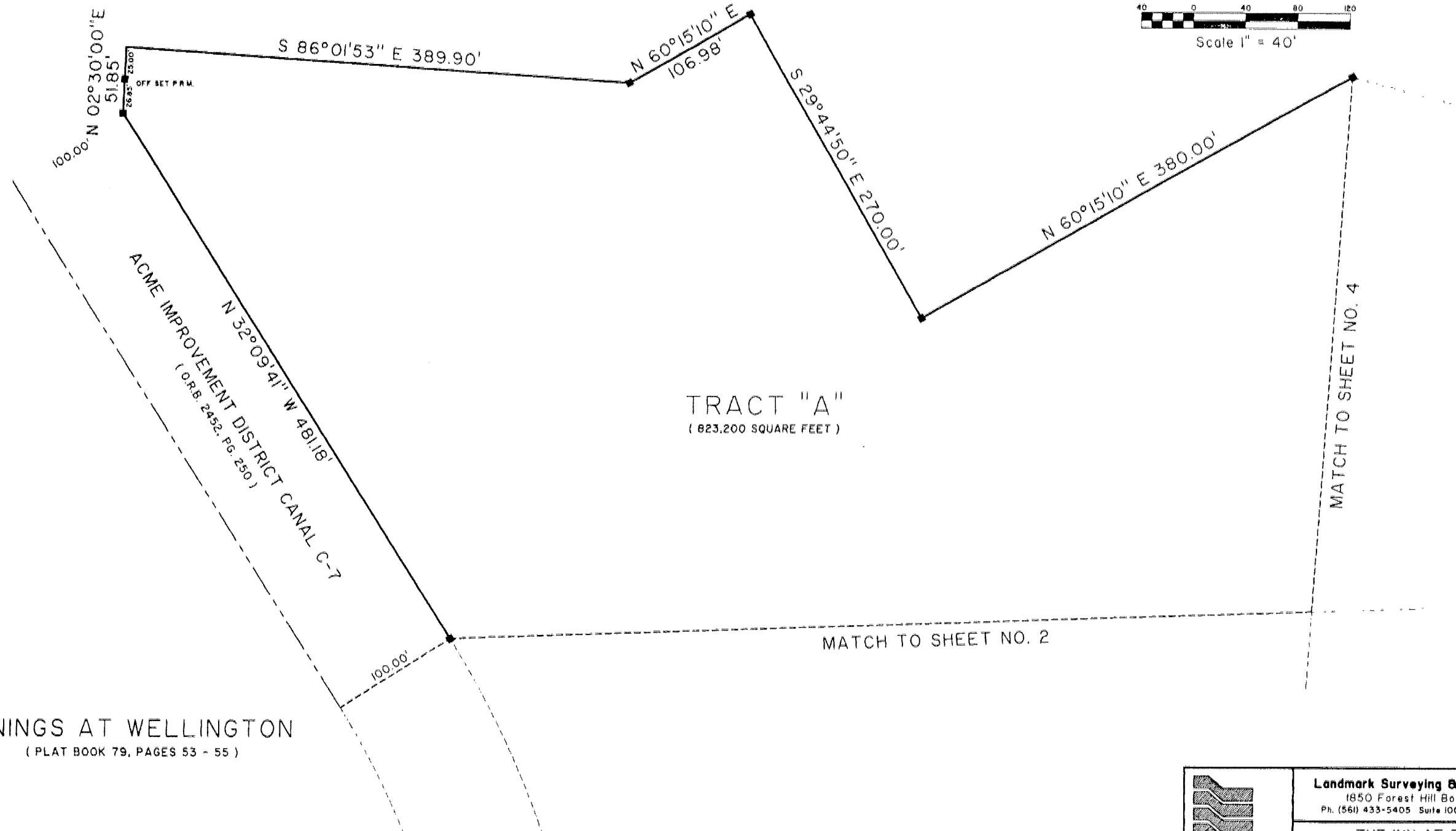


NOT PLATTED

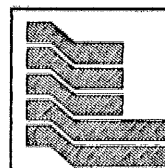
STATE OF FLORIDA
COUNTY OF PALM BEACH
THIS PLAT WAS FILED FOR RECORD AT _____
ON _____ DAY OF _____ 2000
AND DULY RECORDED IN PLAT BOOK NO. _____
ON PAGE _____
BY DOROTHY H. WARE, CLERK OF THE CIRCUIT COURT
D.C.



Scale 1" = 40'



VININGS AT WELLINGTON
(PLAT BOOK 79, PAGES 53 - 55)



Landmark Surveying & Mapping Inc.
1850 Forest Hill Boulevard
Ph. (561) 433-5405 Suite 100 W.P.B. Florida

THE INN AT POLO
COMMERCIAL DEVELOPMENT